

# MONTHLY MEMBERSHIP PROGRESS REPORT

LOCATION MINNESOTA

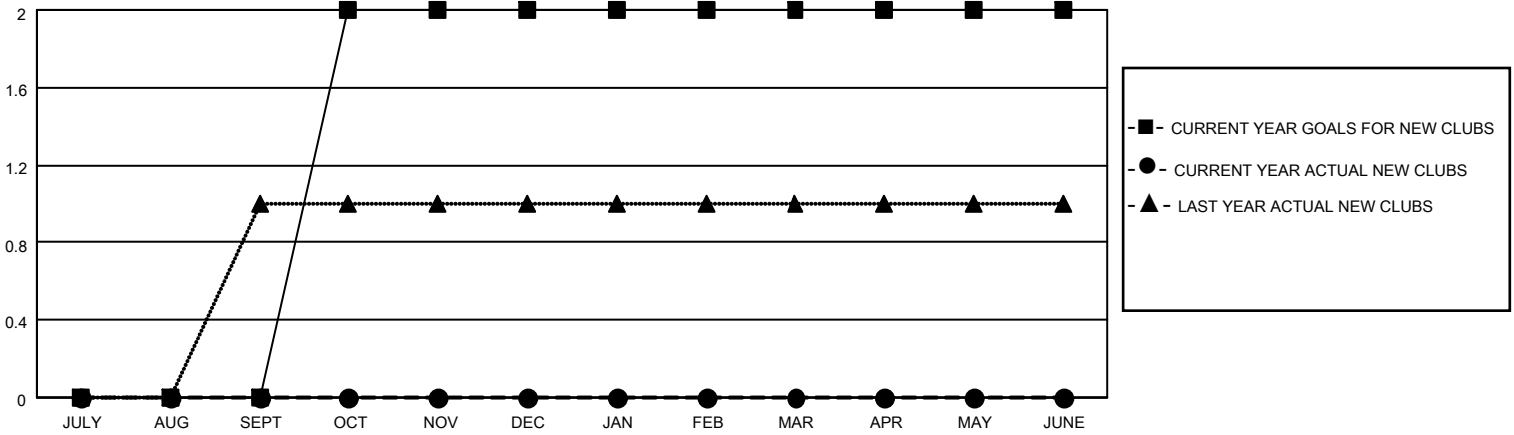
District 5M 1

Results as of: 9/30/2020

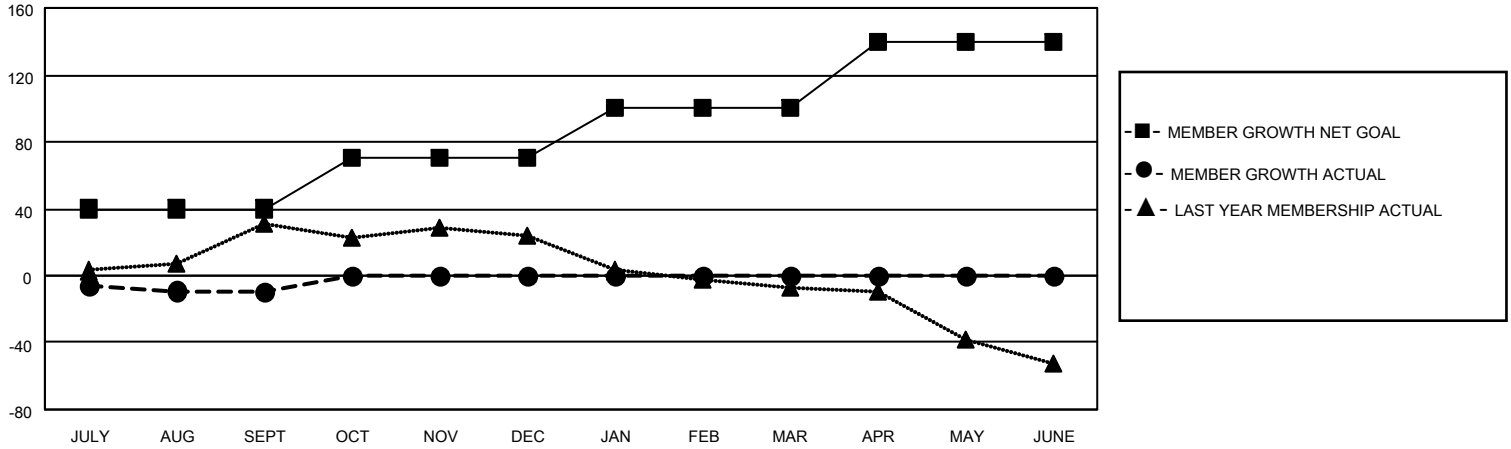
| Clubs                 |               |           |               |
|-----------------------|---------------|-----------|---------------|
| RESULTS FOR 2020-2021 |               |           |               |
| QUARTER               | NEW CLUB GOAL | NEW CLUBS | DROPPED CLUBS |
| JULY/AUG/SEPT         | 0             | 0         | 0             |
| OCT/NOV/DEC           | 2             | 0         | 0             |
| JAN/FEB/MAR           | 0             | 0         | 0             |
| APR/MAY/JUNE          | 0             | 0         | 0             |

| Members               |                        |                      |   |
|-----------------------|------------------------|----------------------|---|
| RESULTS FOR 2020-2021 |                        |                      |   |
| QUARTER               | MEMBER GROWTH NET GOAL | MEMBER GROWTH ACTUAL | DROPPED MEMBERS ACTUAL<br>(including transfers) |
| JULY/AUG/SEPT         | 40                     | 18                   | 25  |
| OCT/NOV/DEC           | 30                     | 0                    | 0   |
| JAN/FEB/MAR           | 30                     | 0                    | 0   |
| APR/MAY/JUNE          | 40                     | 0                    | 0   |

**GOALS AND ACTUAL NEW CLUBS CUMULATIVE**



**GOALS AND ACTUAL MEMBERS CUMULATIVE**



|                        |           |
|------------------------|-----------|
| DROPPED CLUBS: 0       |           |
| <u>DROPPED MEMBERS</u> |           |
| DECEASED               | 6         |
| CLUB CANCELLED         | 0         |
| OTHER                  | 19        |
| <b>TOTAL</b>           | <b>25</b> |

7 CLUBS OF 51 ADDED 1 OR MORE NEW MEMBERS

| <u>GENDER DISTRIBUTION</u> |                |
|----------------------------|----------------|
| MALE                       | 1,277 (74.20%) |
| FEMALE                     | 444 (25.80%)   |

[CLICK HERE FOR CUMULATIVE MEMBERSHIP DATA](#)

|                                 |     |
|---------------------------------|-----|
| TOTAL FAMILY UNIT MEMBERS       | 300 |
| FAMILY MEMBERS PAYING HALF DUES | 152 |